



ESRI Maps on the Earthmate PN-40 GPS Handheld

DeLorme’s Earthmate PN-40 provides mobile professionals with affordable GPS tools for navigation and field data collection. Now the Earthmate PN-40 Extension allows ESRI software users to export map views to the PN-40 handheld GPS receiver for field reference.

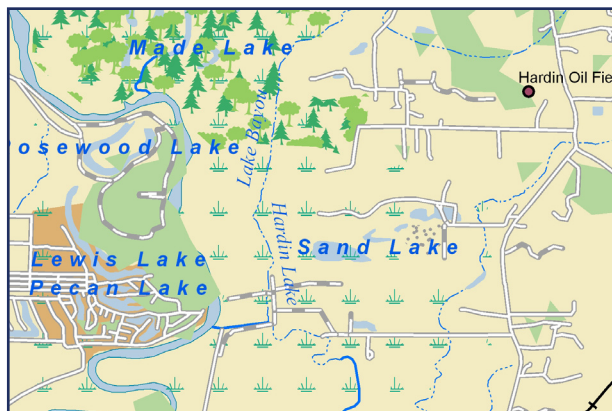
The Earthmate PN-40 Extension enables the efficient capture and exchange of data between the PN-40 and ESRI software:

- Export ESRI Raster map views for use in the field – supports 9.2 and 9.3 versions
- Affordably collect, symbolize, and label waypoints and track files
- Save field-collected waypoints in GPX or ESRI shapefile formats
- Includes USA Topographic vector maps on 3 DVDs – pre-cut for use on the PN-40



The Earthmate PN-40

Waterproof and impact resistant, the rugged PN-40 features an ultra bright screen and includes a dual processor for fast map rendering. The PN-40 is easy to use and ideally suited for all mobile professionals who need access to critical maps in the field.



DeLorme PN-40 supports a wide variety of map types, including:

- DeLorme vector topographic maps
- ESRI map views in raster format and ESRI raster catalog
- Aerial and satellite imagery
- USGS quad maps
- NOAA navigational charts
- MrSID & GeoTIFF files
- Scanned and registered maps

As a fully functional mobile mapping solution, the PN-40 offers numerous on-device mapping tools including:

- On- and off-road route creation and navigation
- Waypoint management tool with symbolization and label options
- A track log function to record movement and trip details
- Measure distance and area tools

Purchasing Options

- Earthmate ESRI Extension bundled with the Earthmate PN-40 — *available April 2009*
- Earthmate ESRI Extension software only — *available April 2009*



PN-40 Specifications

Hardware

- 32-channel STMicroelectronics GPS chipset for near-instantaneous signal acquisition and retention
- Dual-core processor for rapid map rendering, even with high-resolution aerial imagery
- 65K-color daylight-reading screen for visibility in any light conditions
- 3-axis electronic compass that performs in any position
- Sensitive barometric altimeter for accurate altitude readings
- WAAS-enabled
- Records up to 10 tracks (10,000 points per track)
- Holds up to 1,000 user-defined waypoints
- Manages up to 50 routes
- On-board g-flash memory
- Support for high capacity SDHC cards
- Waterproof to IPX-7 standard
- Rugged rubberized housing

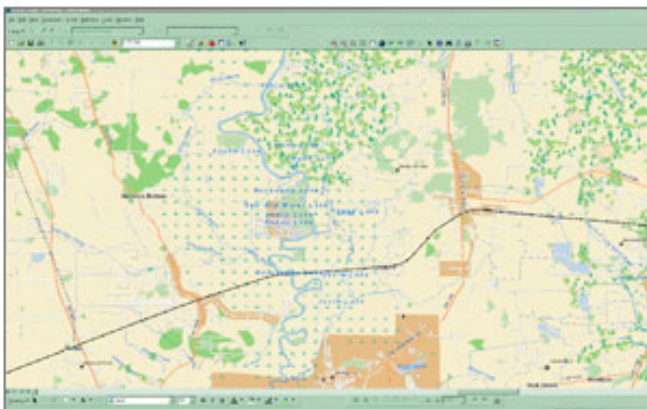


Included Map Data

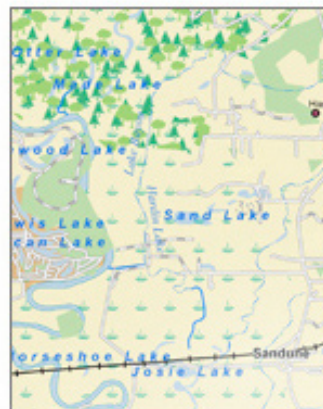
- Pre-loaded worldwide highway/major road base map
- Vector topographic maps of the entire USA on three regional disks. Derived from USGS 1:100K topographic maps. Includes detailed streets of the entire U.S. and four million POIs.
- Almanac information: sun, moon, and tides

Power

- Travel Power Kit includes a rechargeable Li-Ion battery with 120-volt A/C and 12-volt DC charger
- Also runs on 2 AA batteries (included)



Prepare a map in your ESRI app...



cut the required view...



to your PN-40 GPS.